

MP_Direzione Vento [°]_Media oraria

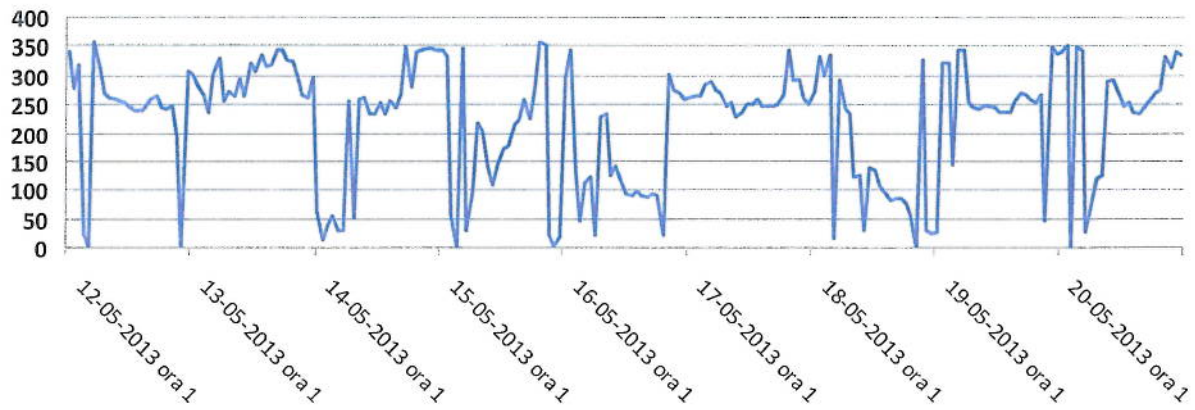


Fig.1: Direzione vento_Masseria Puzzolente

MP_Velocità Vento [m/s]_Media oraria

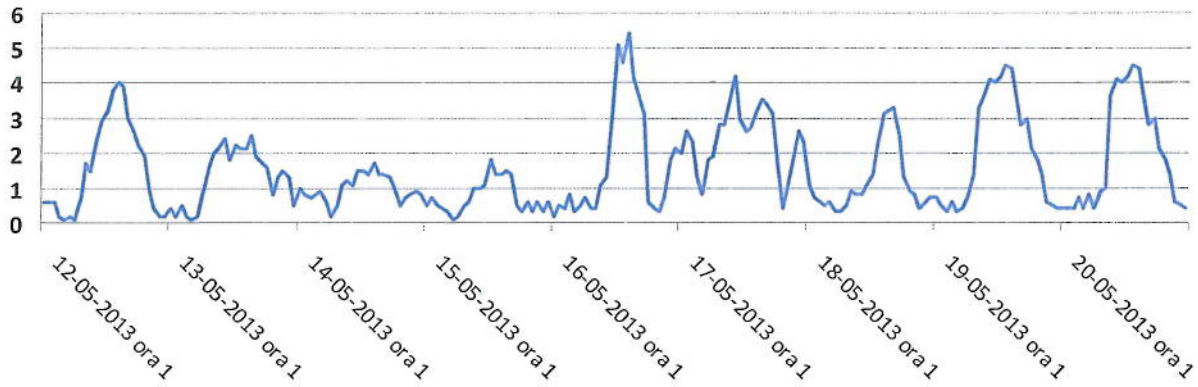


Fig. 2: Velocità vento_Masseria Puzzolente

MP_Temperatura Aria [°C]_Media oraria

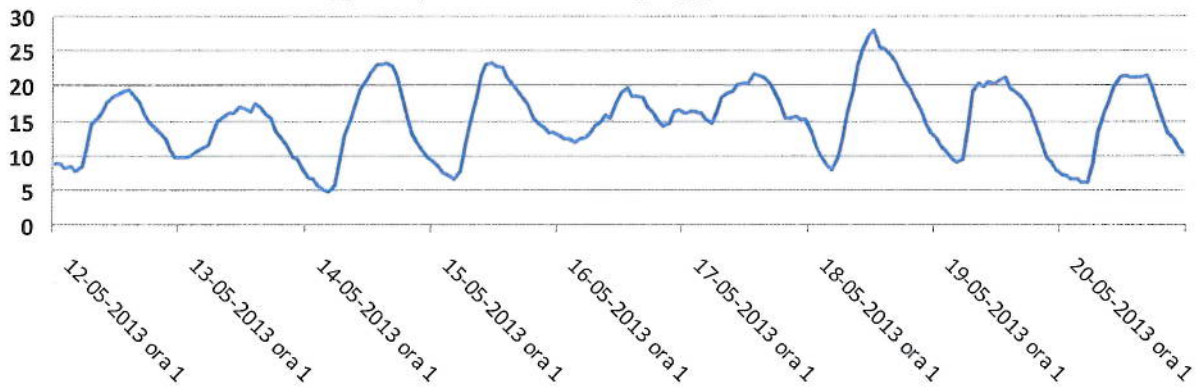


Fig. 3: Temperatura_Masseria Puzzolente

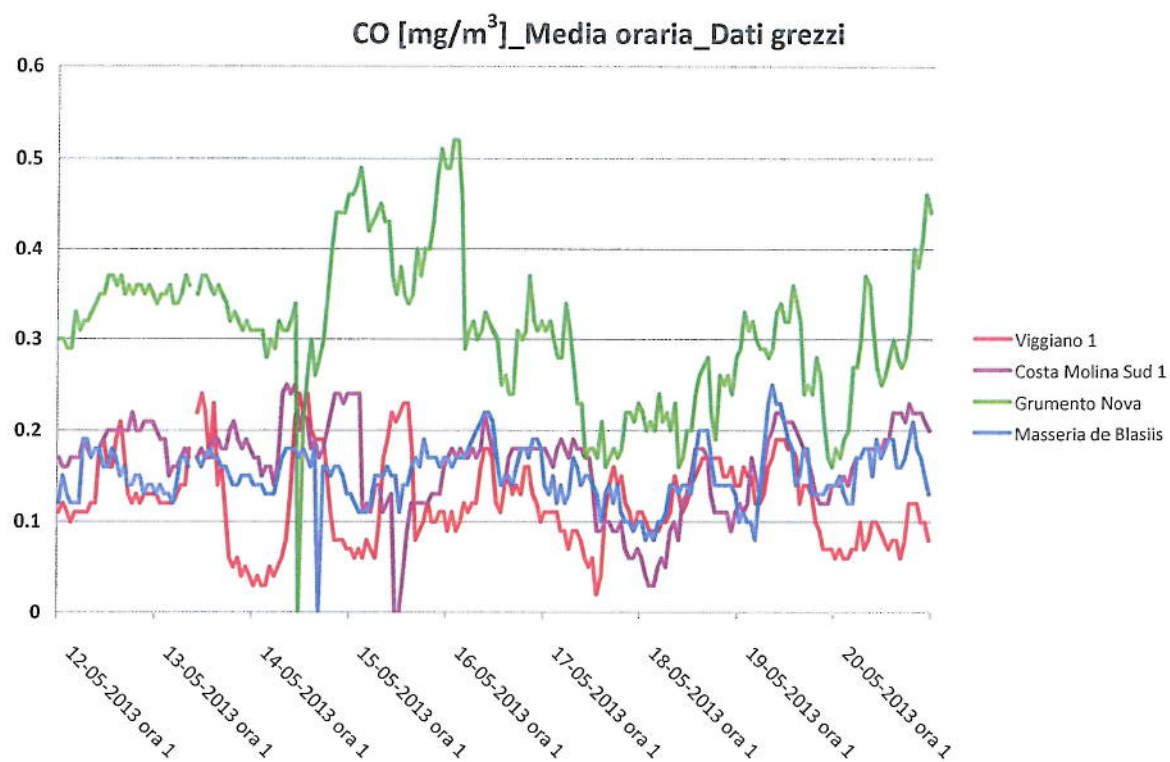


Fig. 4: CO_Quattro centraline ARPAB_Viggiano 1, Costa Molina Sud 1, Grumento Nova, Masseria de Blasiis

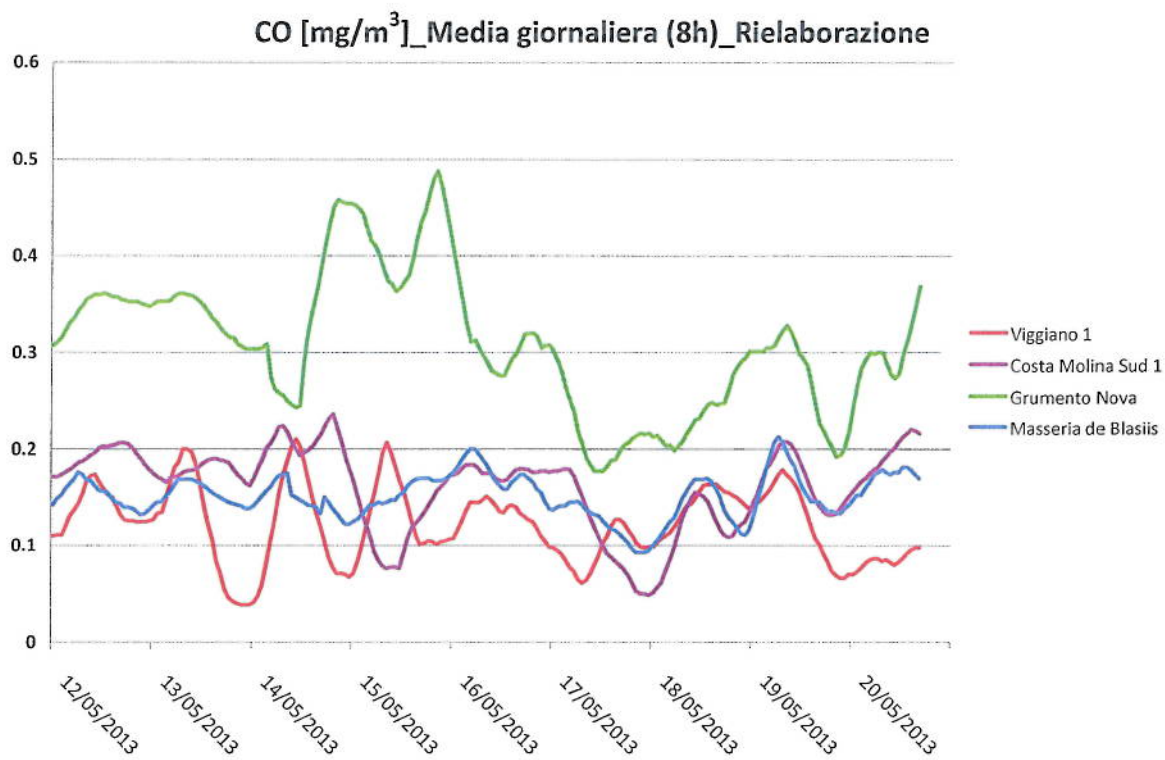


Fig. 5: CO_Quattro centraline ARPAB_Viggiano 1, Costa Molina Sud 1, Grumento Nova, Masseria de Blasiis

MP_CO [mg/m³]_{Media oraria_Dati grezzi}

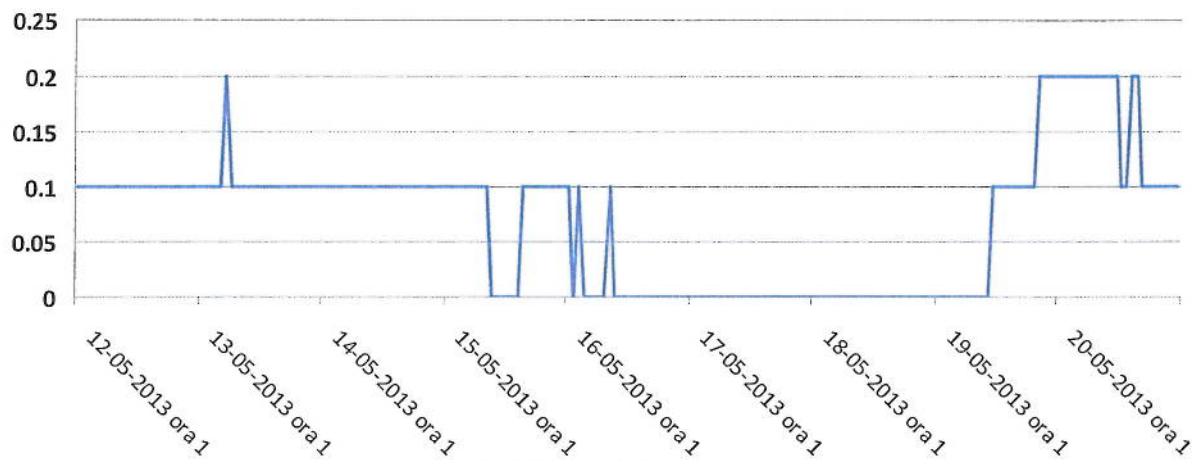


Fig. 6: CO_Masseria Puzzolente

MP_CO [mg/m³]_{Media giornaliera (8h)_Rielaborazione}

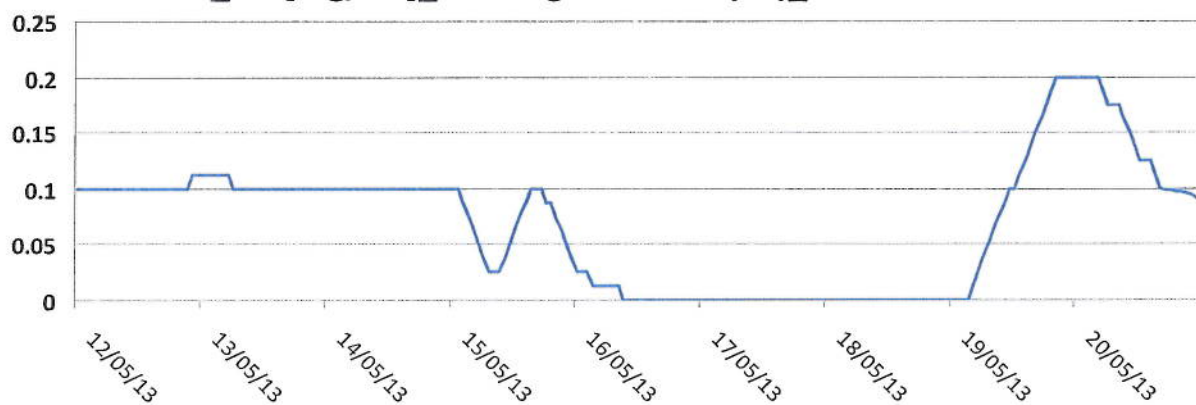


Fig.7: CO_Masseria Puzzolente

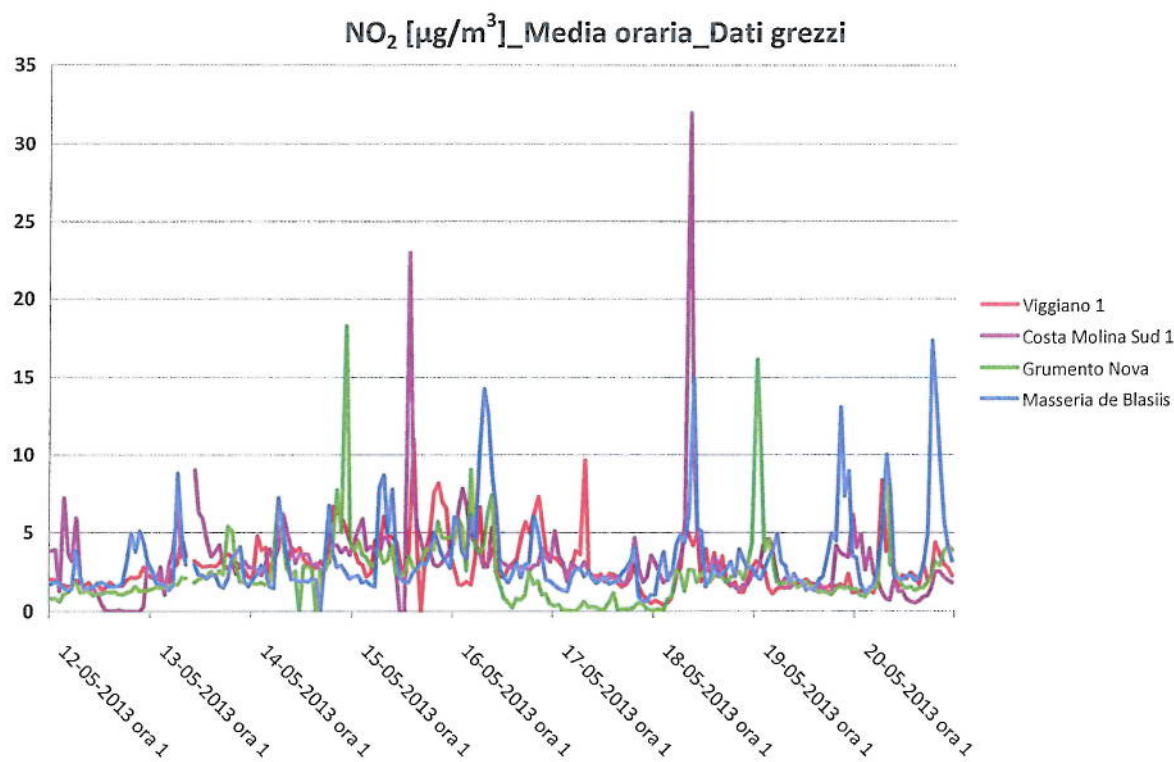


Fig. 8: NO₂_Quattro centraline ARPAB_Viggiano 1, Costa Molina Sud 1, Grumento Nova, Masseria de Blasiis

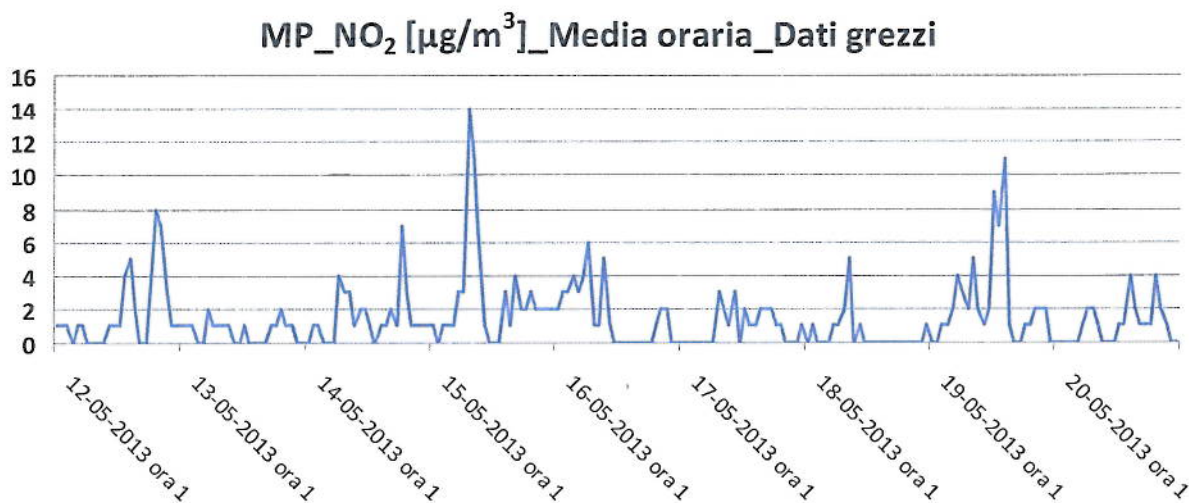


Fig. 9: NO₂_Masseria Puzzolente

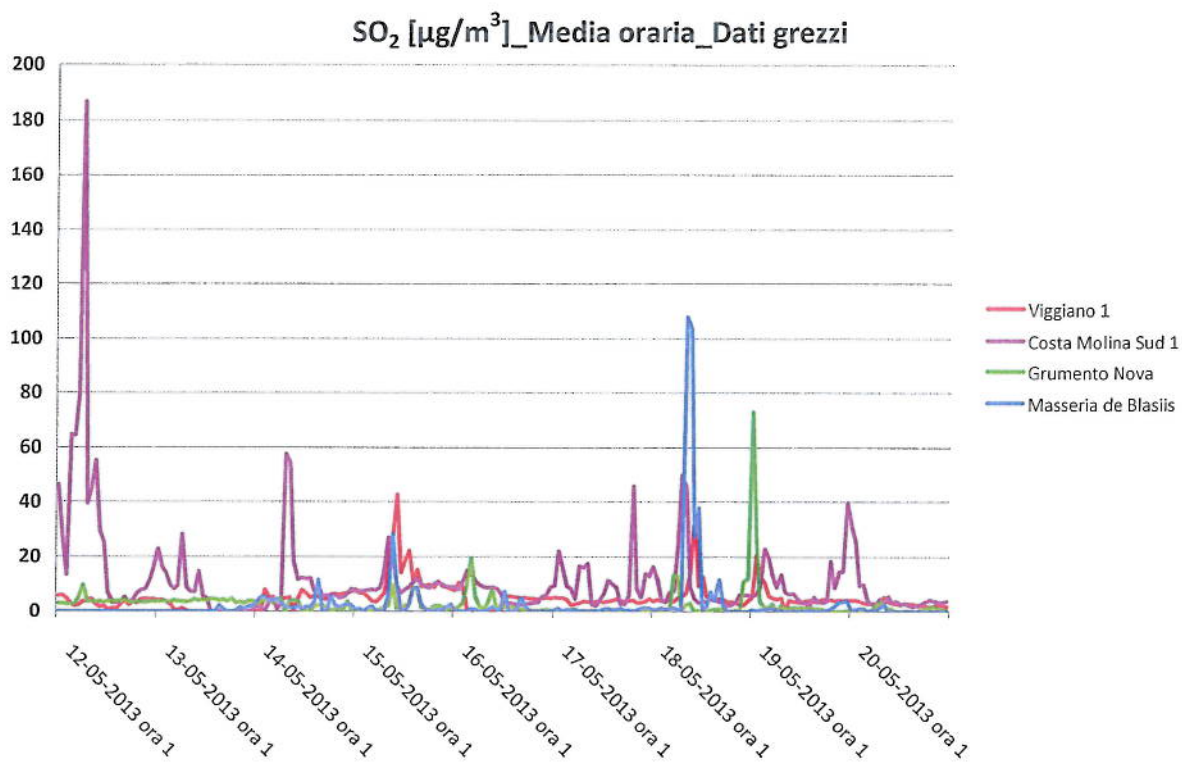


Fig. 10: SO₂_Quattro centraline ARPAB_Viggiano 1, Costa Molina Sud 1, Grumento Nova, Masseria de Blasiis

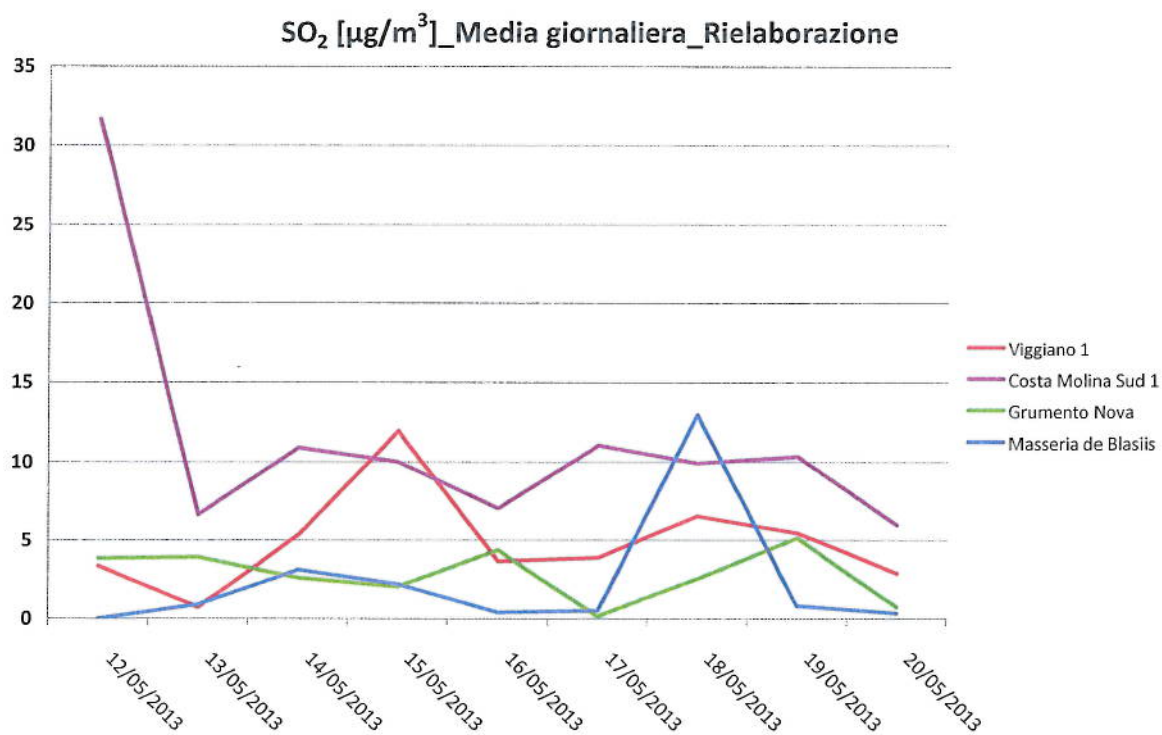


Fig. 11: SO₂_Quattro centraline ARPAB_Viggiano 1, Costa Molina Sud 1, Grumento Nova, Masseria de Blasiis

MP_SO₂ [μg/m³]-Media oraria_Dati grezzi

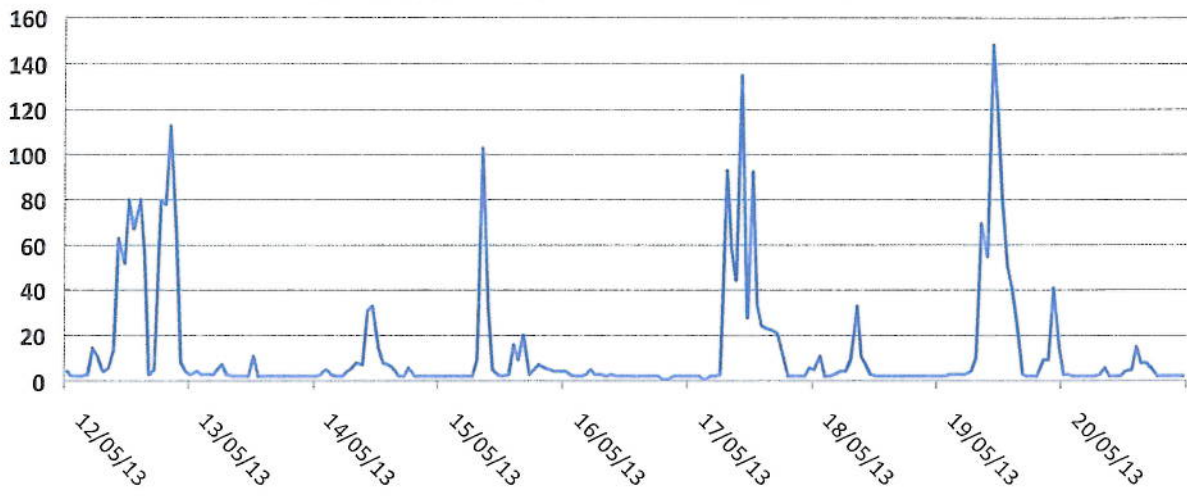


Fig. 12: SO₂_Masseria Puzzolente

MP_SO₂ [μg/m³]-Media giornaliera_Rielaborazione

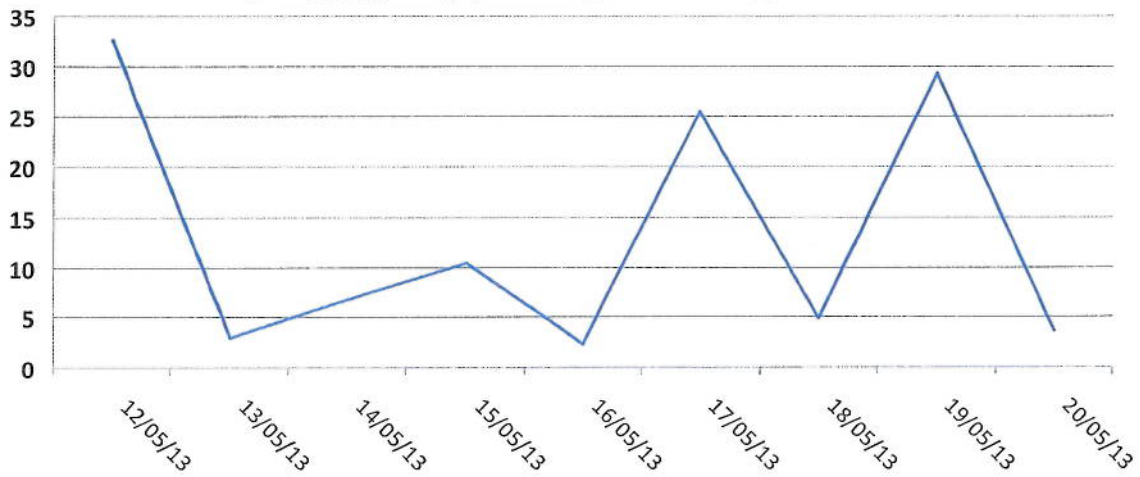


Fig. 13: SO₂_Masseria Puzzolente

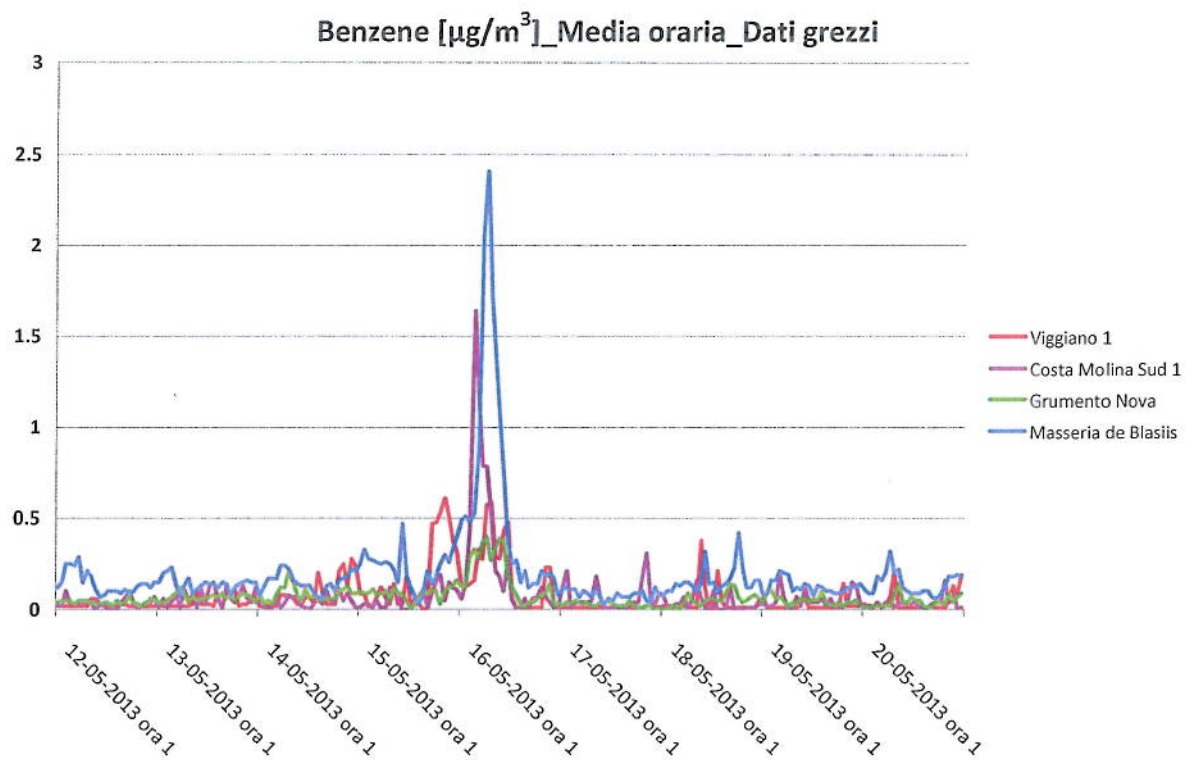


Fig. 14: Benzene_Quattro centraline ARPAB_Viggiano 1, Costa Molina Sud 1, Grumento Nova, Masseria de Blasiis

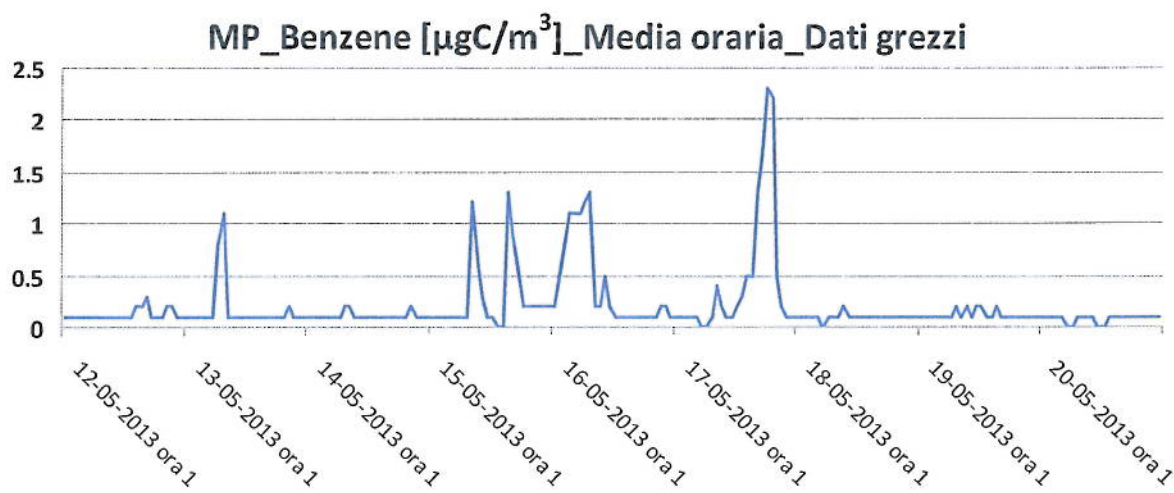


Fig. 15: Benzene_Masseria Puzzolente

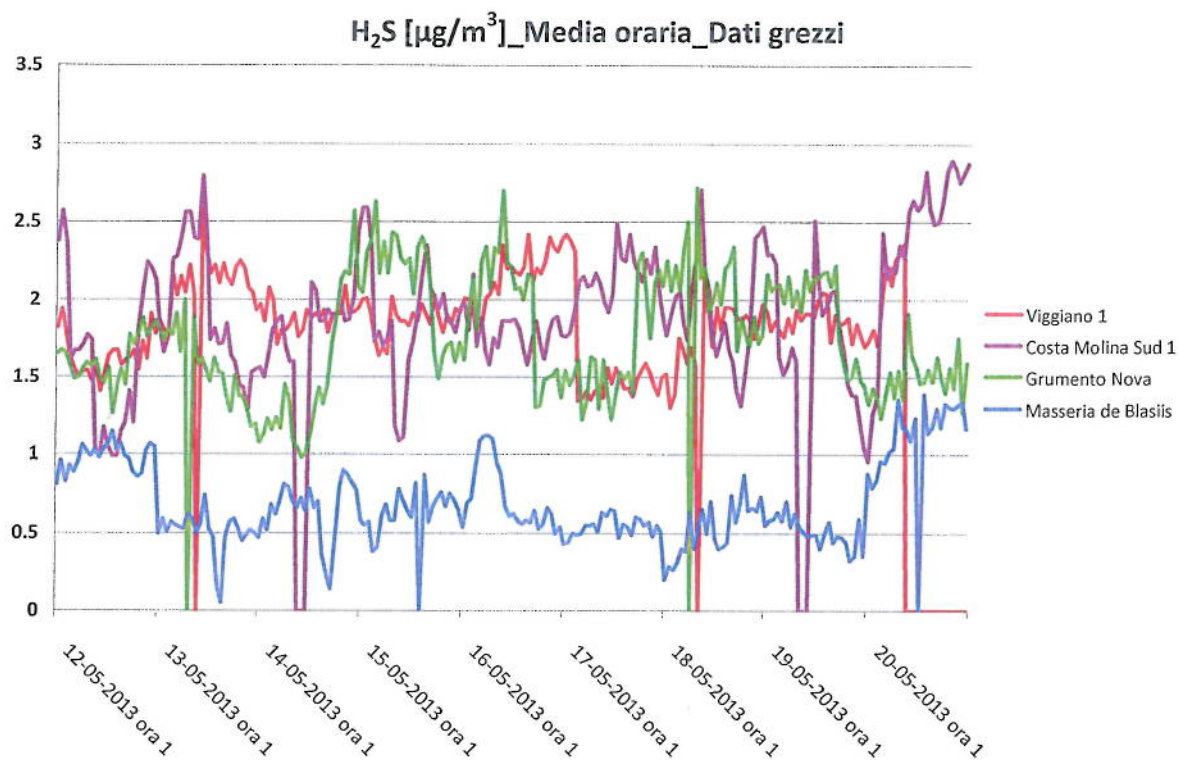


Fig. 16: H₂S_Quattro centraline ARPAB_Viggiano 1, Costa Molina Sud 1, Grumento Nova, Masseria de Blasiis

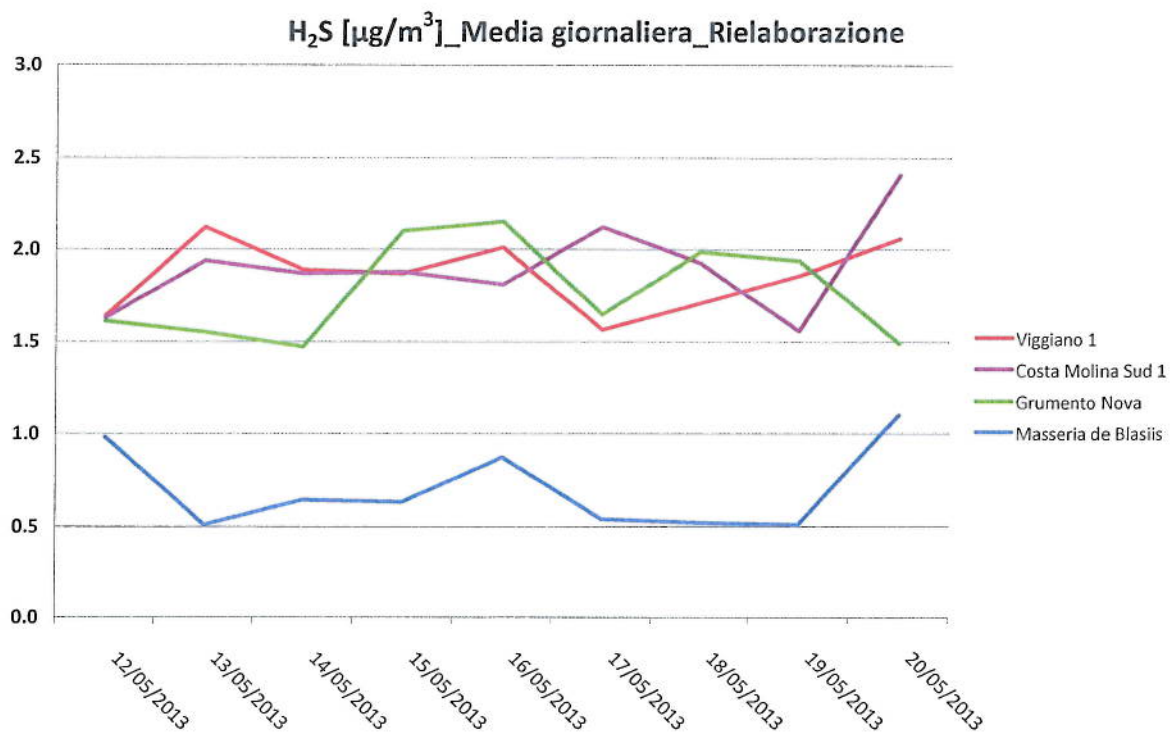


Fig. 17: H₂S_Quattro centraline ARPAB_Viggiano 1, Costa Molina Sud 1, Grumento Nova, Masseria de Blasiis

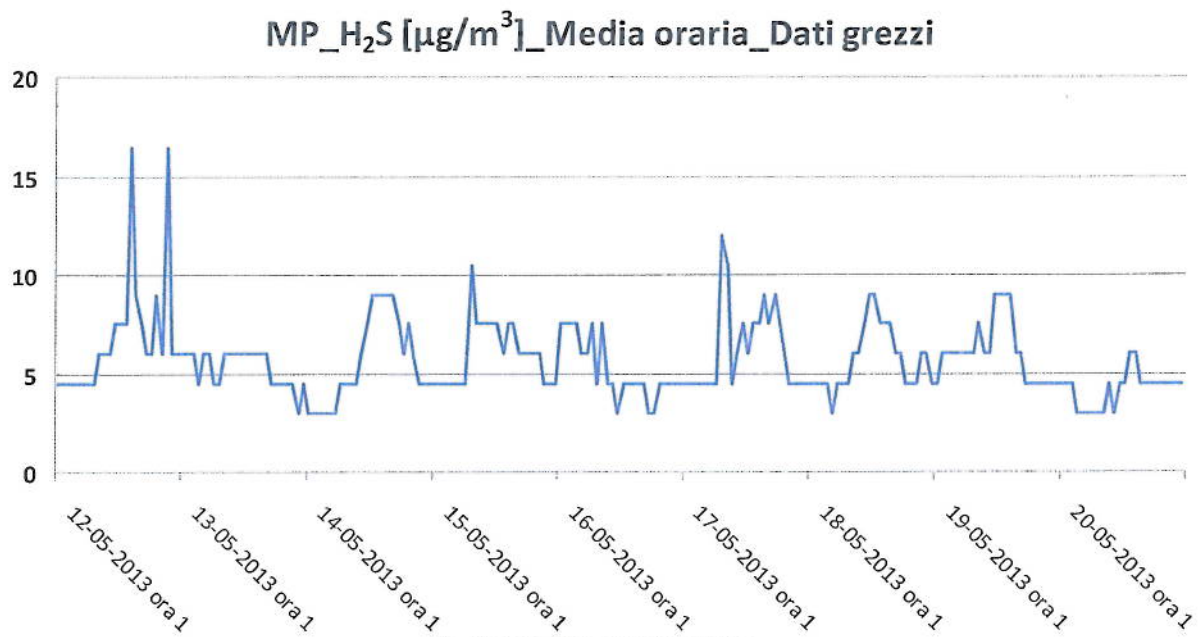


Fig. 18: H₂S_Masseria Puzzolente

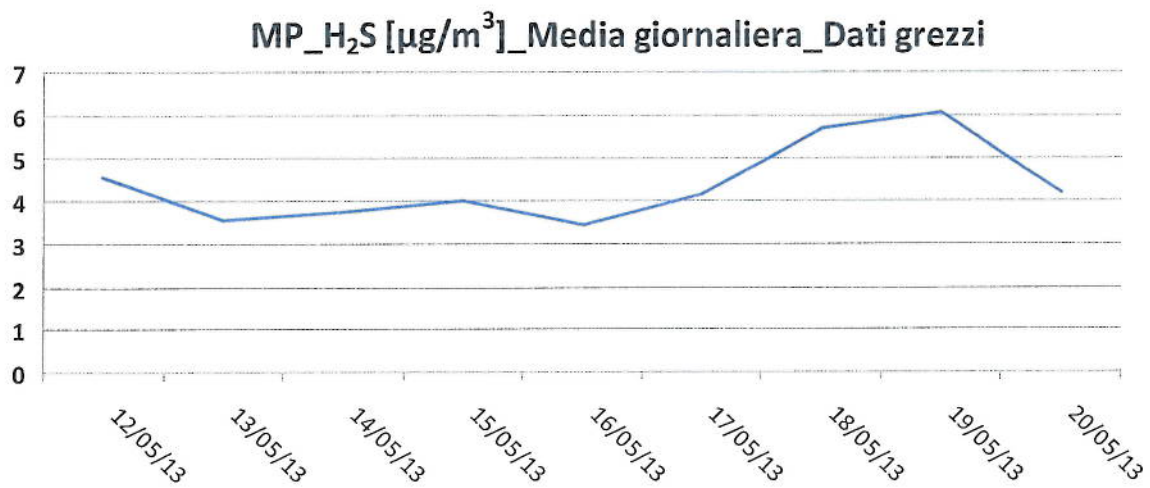


Fig. 19: H₂S_Masseria Puzzolente

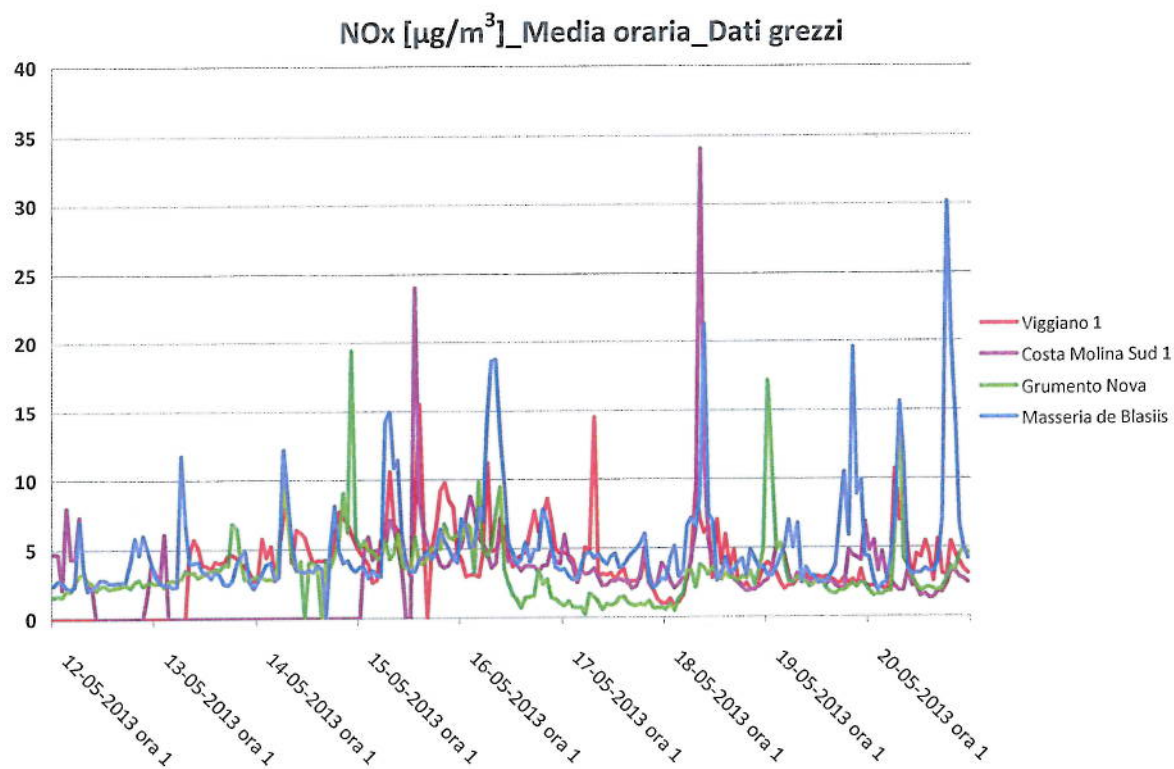


Fig. 20: NOx_Quattro centraline ARPAB_Viggiano 1, Costa Molina Sud 1, Grumento Nova, Masseria de Blasiis

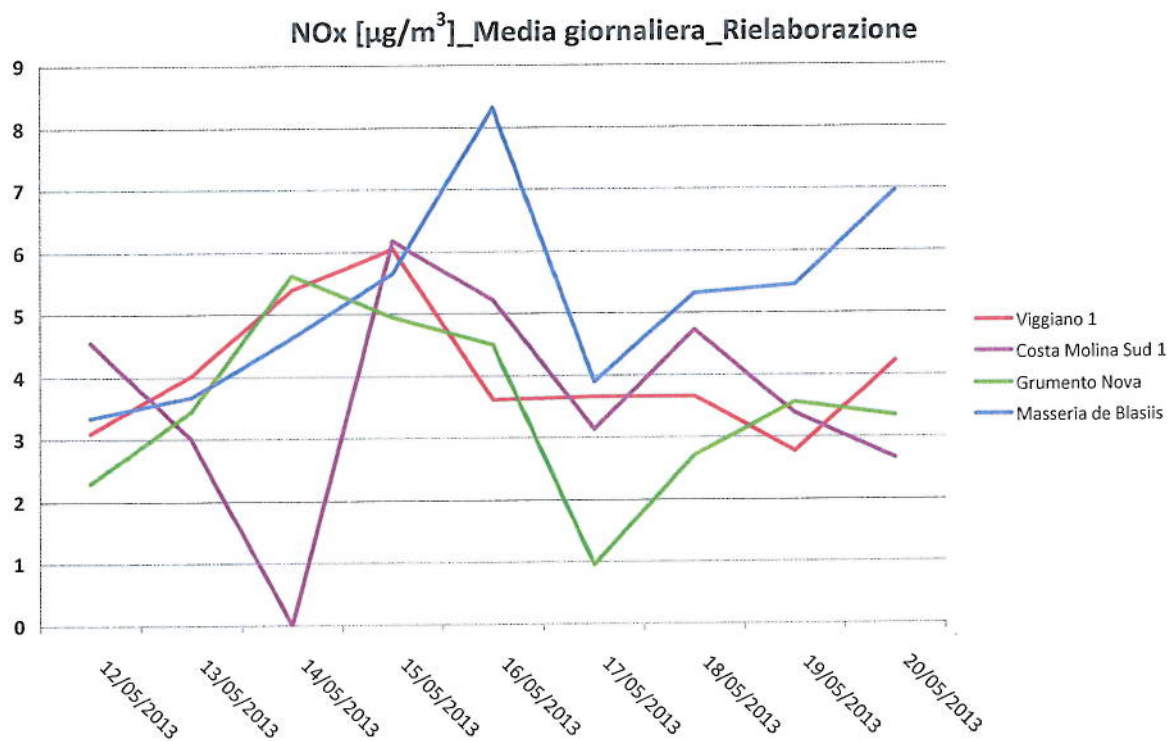


Fig. 21: NOx_Quattro centraline ARPAB_Viggiano 1, Costa Molina Sud 1, Grumento Nova, Masseria de Blasiis

MP_NO_x [μg/m³]_{Media oraria_Dati grezzi}

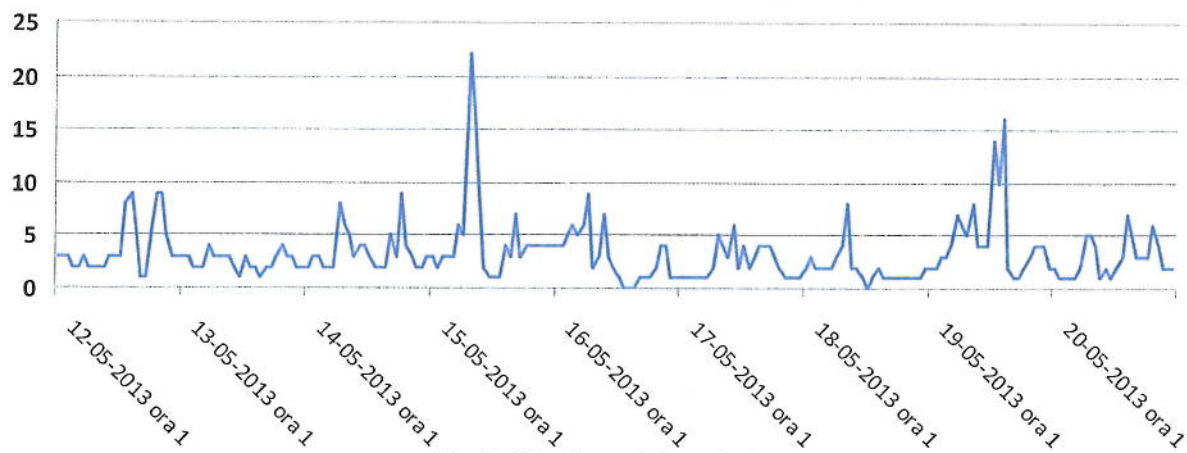


Fig. 22: NO_x Masseria Puzzolente

MP_NO_x [μg/m³]_{Media giornaliera_Rielaborazione}

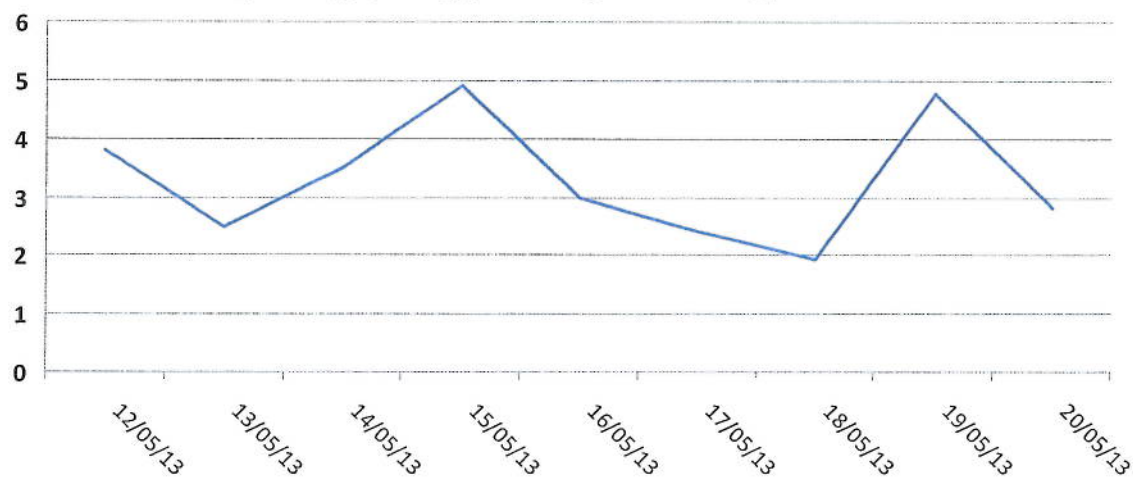


Fig. 23: NO_x Masseria Puzzolente

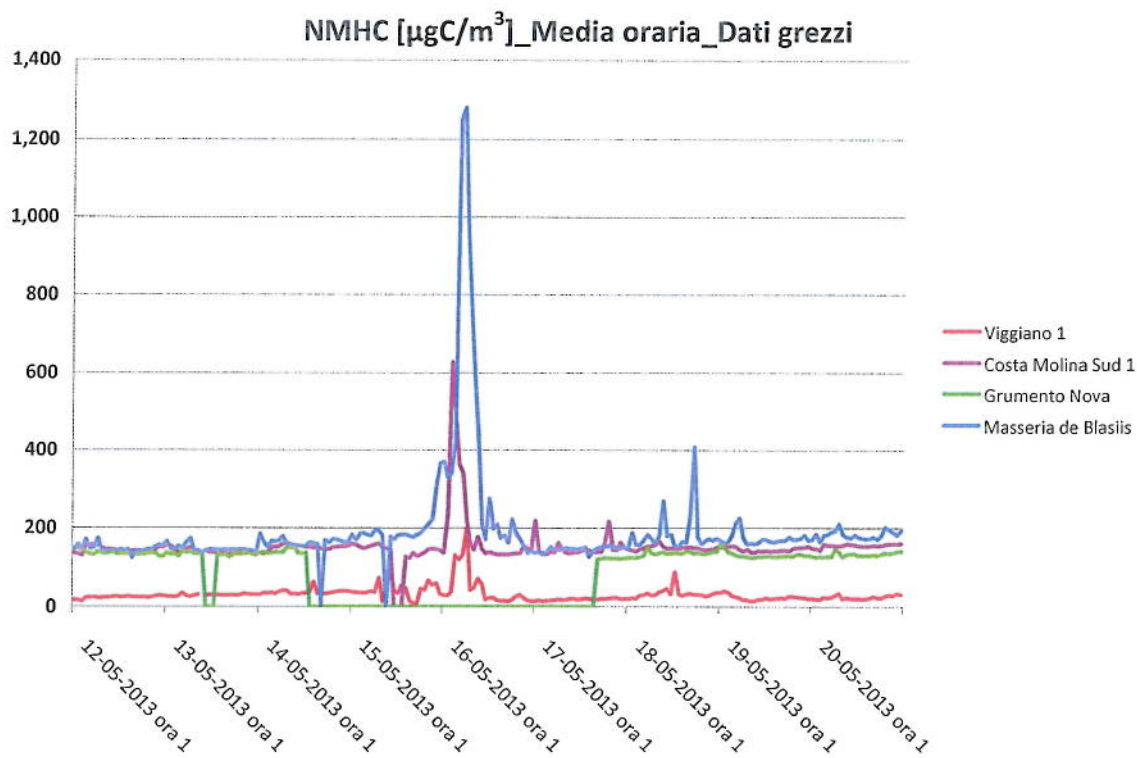


Fig. 24: ID_NMET_Quattro centraline ARPAB_Viggiano 1, Costa Molina Sud 1, Grumento Nova, Masseria de Blasiis

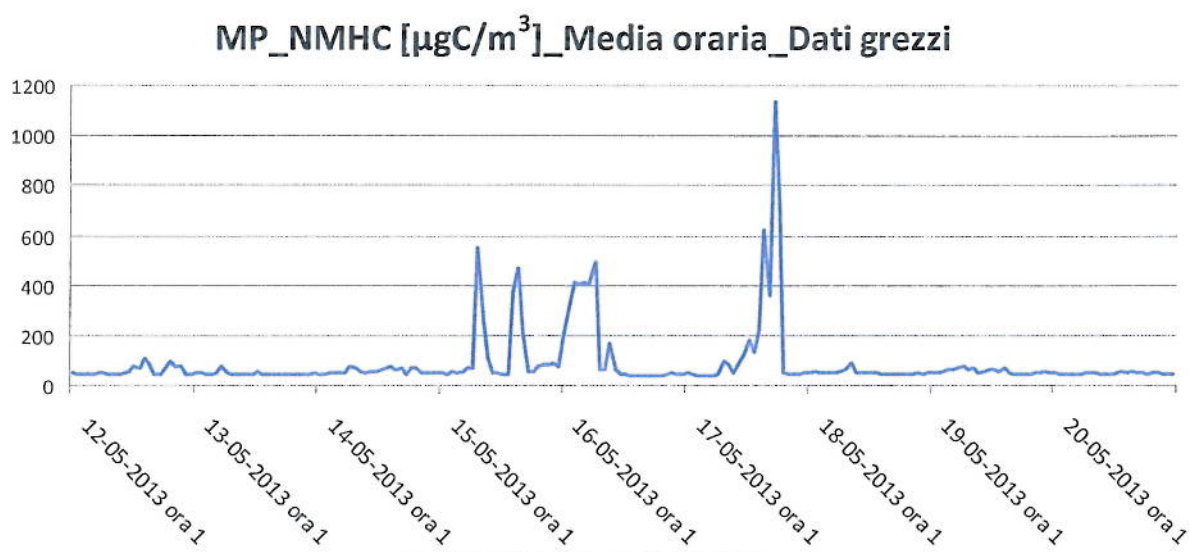


Fig. 25: ID_NMET_Masseria Puzzolente

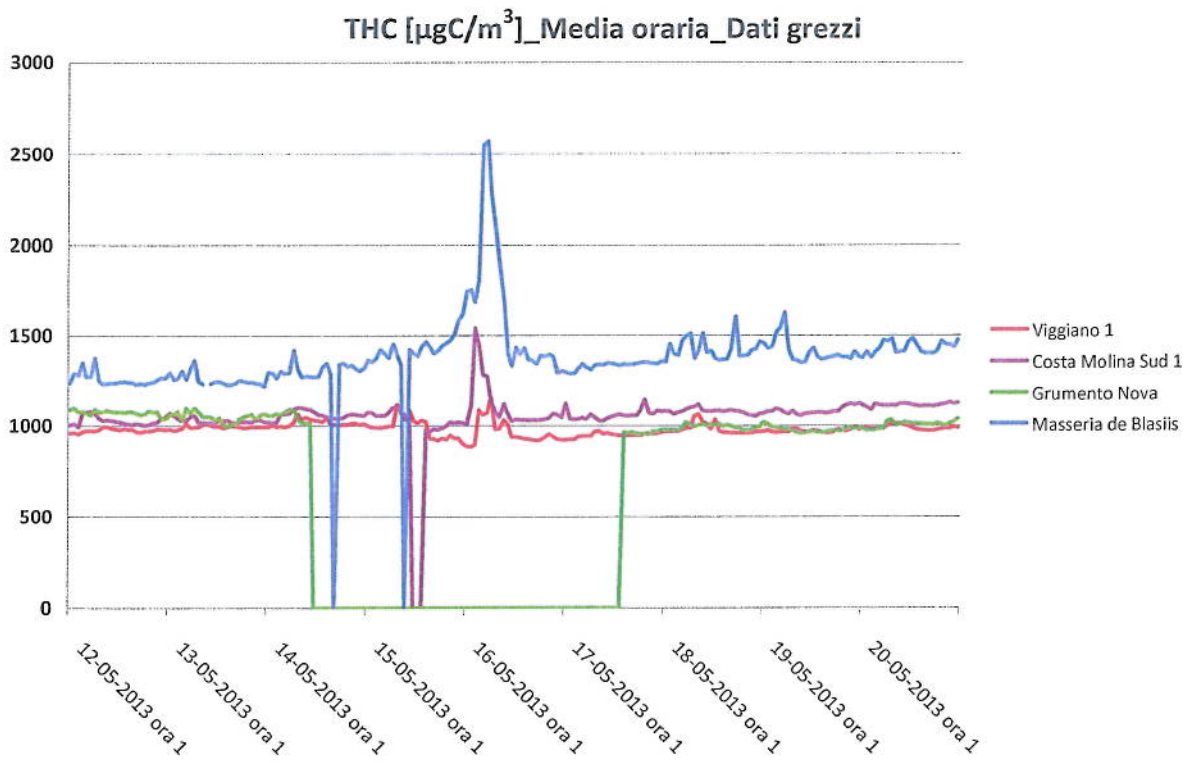


Fig. 26: THC_Quattro centraline ARPAB_Viggiano 1, Costa Molina Sud 1, Grumento Nova, Masseria de Blasiis

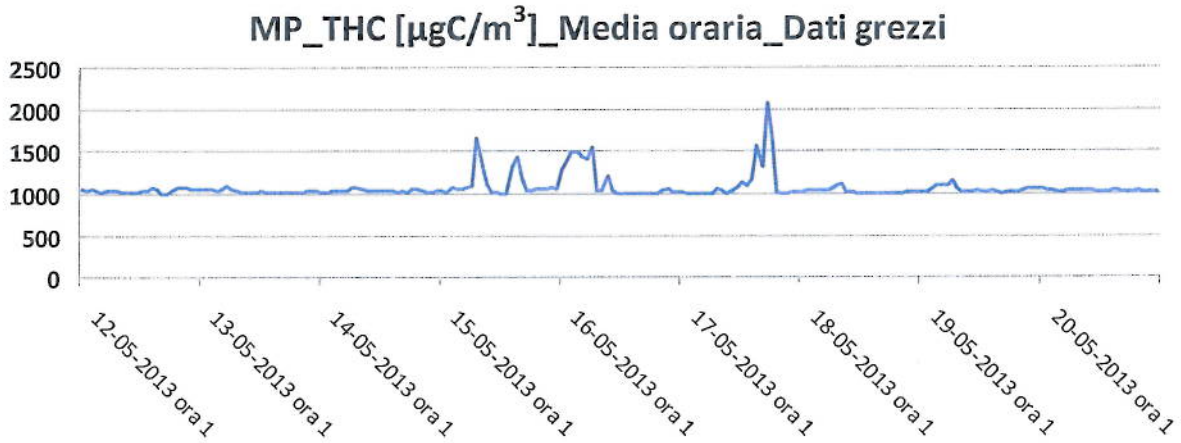


Fig. 27: THC_Masseria Puzzolente